



Intuicom[®]

RTK Bridge-C[™] Installation Guide

**For
Trimble[®] EZ-Guide[®] 500 Autopilot**

Intuicom, Inc.
1880 S Flatiron Court
Boulder, CO 80301
(303) 449-4330
www.intuicom.com

This Document is for internal use by Intuicom Employees or by Resellers and Distributors who are authorized and/or licensed to install Intuicom products. No part of this document may be reproduced or transmitted in any form or by any means, electronic or mechanical, or for any purpose without the express written permission of Intuicom Inc.

© 2000 - 2009 Intuicom Incorporated. All rights reserved.

Intuicom reserves the right to make changes to this document without notice. Unless otherwise agreed to in writing, Intuicom assumes no responsibility or liability for the use of this document or for the infringement of any copyright or other proprietary right and Intuicom shall deem nothing contained in this document a warranty or guarantee.

Intuicom is a registered trademark of Intuicom, Inc.

Other product names mentioned in this guide may be copyrights, trademarks, or registered trademarks of their respective companies and are hereby acknowledged.

1 Overview

The EZ-Guide 500 receiver is typically configured to accept CMR format RTK corrections from an Intuicom RTK Bridge-C which in turn has been configured to connect to a GPS/GNSS reference network. The intended audience for this document is a dealer or integrator familiar with the EZ-Guide 500 and generally familiar with the Intuicom RTK Bridge-C. The Intuicom RTK Bridge-C User Guide covers the steps necessary for its configuration.

2 Requirements for Installation

2.1 Required Information

In order to operate an Intuicom RTK Bridge-C, you are required to have the necessary information to access and log in to the Real-Time Network. This information is entered into the RTK Bridge-C and stored in a profile. More details on setting up an RTK Bridge-C is available in the RTK Bridge manual.

- IP address,
- TCP port,
- NTRIP mountpoint name,
- username and password for access to the real-time GPS/GNSS network

2.2 Required Equipment

2.2.1 Intuicom Equipment and Accessories

1. Intuicom RTK Bridge-C with activated data provider account (Verizon, ATT, etc...)
2. Intuicom RTK Bridge-C to EZ-Guide 500 data/power cable:
[P/N: FIP1-RTKCAB-UNF2]
3. Intuicom RTK Bridge-C Cellular/GPS antenna/cable:
[P/N: FIP4- FIP4-MMDM-MAX-ANT (magnetic mount)]
4. RTK Bridge Programming Cable
[P/N: FIP4- RTKPWDATA]

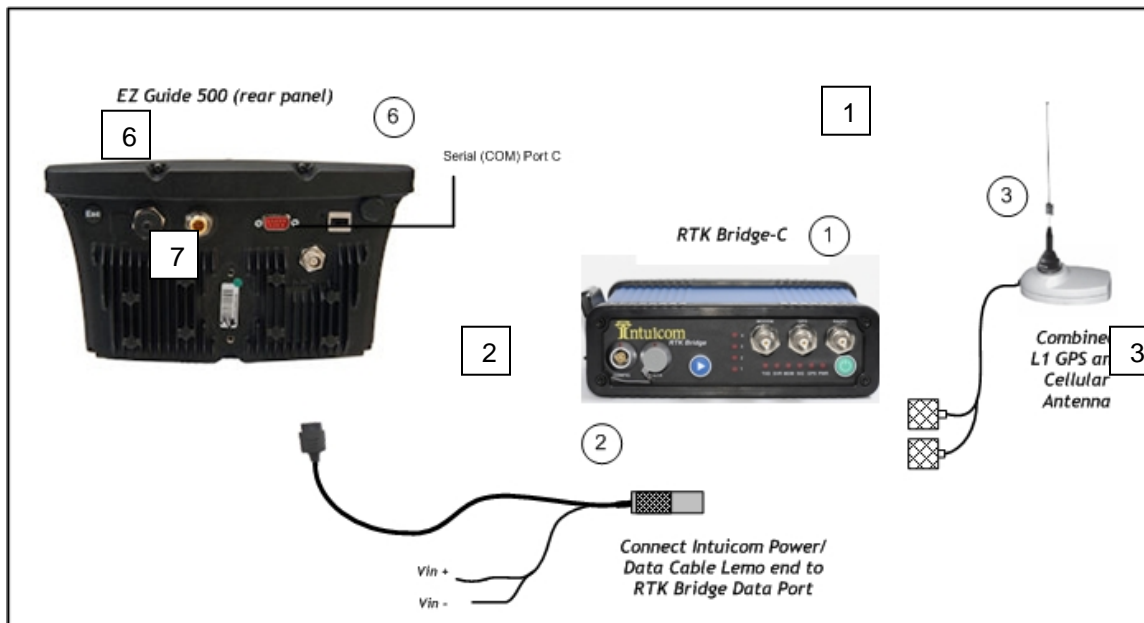
2.2.2 Other Equipment and Accessories

5. PC with serial port and Trimble AgRemote Software
6. Trimble EZ-Guide 500 receiver with RTK (CMR) option enabled and Port B available
7. Trimble EZ-Guide 500 EZ-Steer Extension Cable (or any cabling system typically used to run Trimble AgRemote for configuration)

3 Installation Instructions

Below is the installation Diagram for the recommended installation of the Intuicom RTK Bridge-C Utilizing the equipment noted above.

Diagram 1

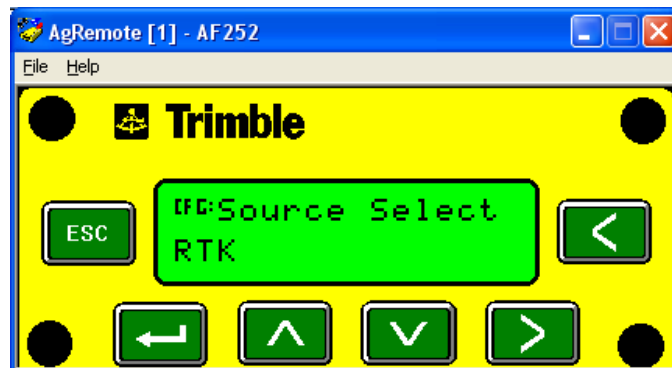
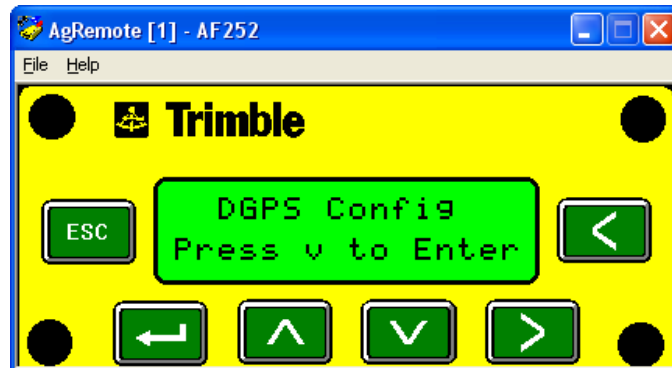


3.1 Configuration

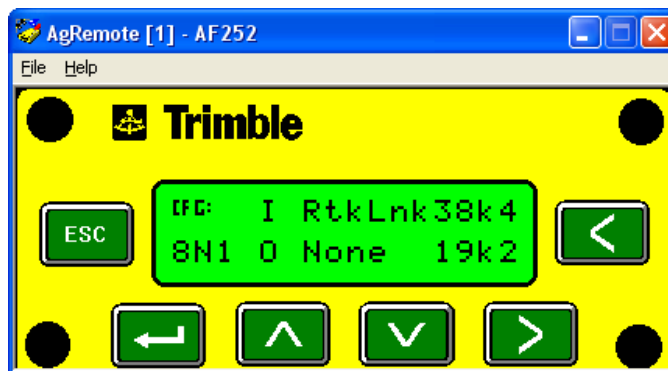
- Configure the Intuicom RTK Bridge to connect to GPS/GNSS Reference network and obtain CMR/CMR+ correction data stream from an appropriate single reference station, or as a VRS.
- Configure the resulting RTK correction data to be output front data port at a known baud rate (a baud rate of 38400 is recommended).
- Confirm GPS and cellular antenna (typically a combined antenna with two coaxial cables with TNC connectors) are connected and placed where they have good sky view and good cellular signal.
- Independently confirm the RTK correction data stream from the data port on the front of the unit. This can be accomplished by viewing data output from the data port into

any terminal emulation software (ie. HyperTerminal) and RTK Bridge Programming Cable. Details can be found in the Intuicom RTK Bridge-C User Guide.

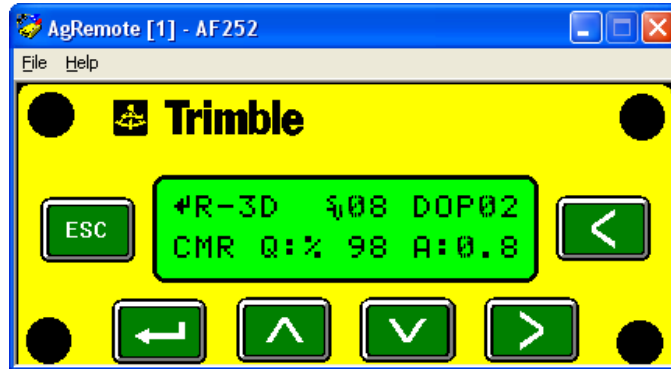
- Using the Intuicom RTK Bridge-C to EZ-Guide 500 data/power cable, connect the RTK Bridge-C data port to the C Port on the EZ-Guide 500.
- Connect setup data/power cabling to the EZ-Guide 500 Port C and a serial port on a PC running AgRemote. Apply power and connect to the EZ-Guide 500 with AgRemote.
- Using AgRemote, configure the EZ-Guide 500 receiver to receive RTK corrections in the CMR format from Port C at a baud rate of 38400:
 - Configure DGPS Options – select the source as RTK



- Configure Port C – configure the input format to be “Generic CMR Radio” at a baud rate of 38400.



- Confirm operation – Confirm the Intuicom RTK Bridge-C is correctly configured and its antennas are connected and within cellular coverage. The main status view in AgRemote should report that it is receiving RTK corrections.



You have now demonstrated that the EZ-Guide 500 is receiving corrections and fixing position. This confirmation of Fixed RTK operation can also be visualized by a solid GREEN LED on the roof-mounted EZ-Guide 500 (opposite the Ports location).